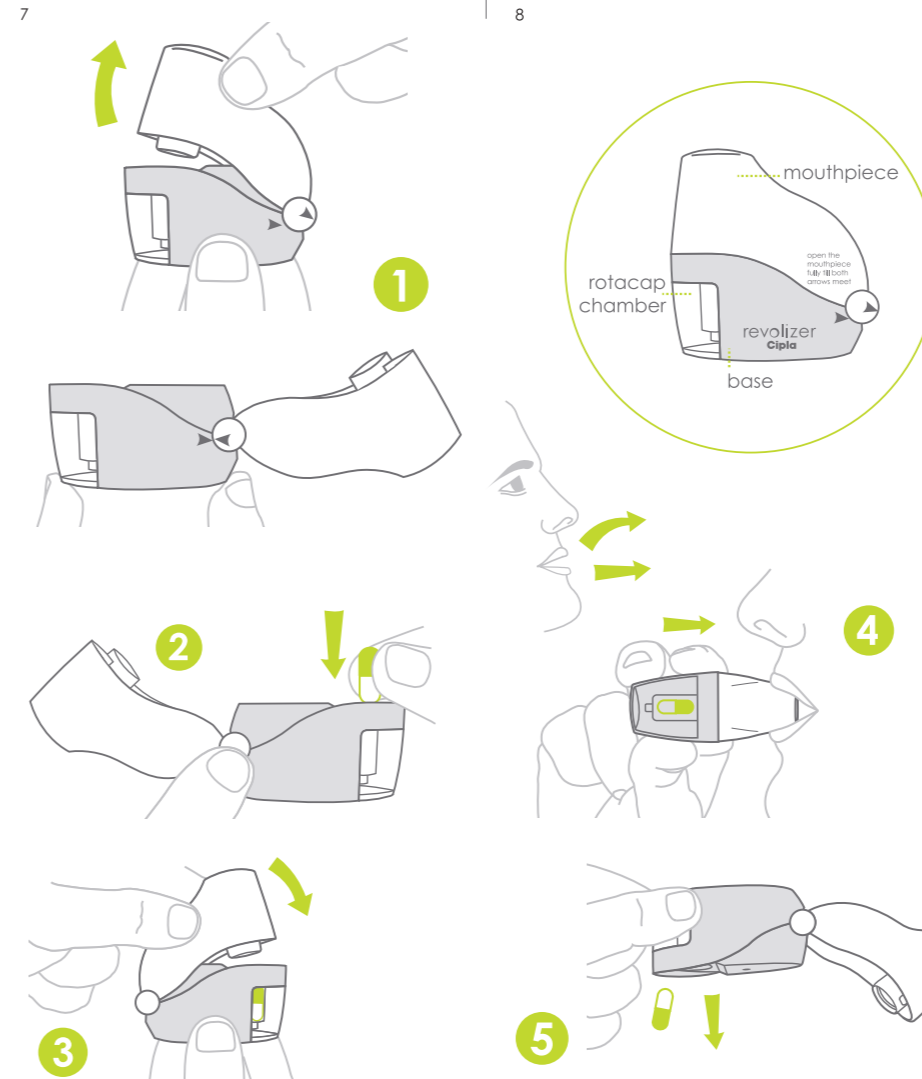


CE
INSTRUCTIONS FOR USE
Please read these instructions
carefully and completely before use.

new revolizer
use only with **cipla** rotacaps®



- NOTE:**
- Keep the Revolizer clean and dry at all times. Never use the Revolizer when it is wet.
 - It is recommended to use a new Revolizer every 6 months.
 - Use only as directed by your doctor. If the recommended dose does not provide relief from symptoms or if symptoms become worse, consult your doctor.
 - Open the Rotacap bottle just prior to use.
 - At times a fine layer of powder may remain in the empty Rotacap after use. This is normal and does not alter the effect of the medicine.

CAUTION: DO NOT PUSH ANY CLOTH OR INSTRUMENT INTO THE MOUTHPIECE OF THE REVOLIZER AS THIS MAY CAUSE DAMAGE

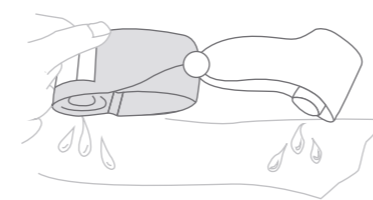


HOW TO USE YOUR REVOLIZER CORRECTLY
REFER TO THE DIAGRAMS

- STEP 1**
To open, hold the Revolizer at the base with one hand and pull back the mouthpiece as shown till **both arrows meet**.
- STEP 2**
Remove a Rotacap from its bottle. Insert the Rotacap into the Rotacap chamber with the transparent end facing down as shown.
- STEP 3**
Close the mouthpiece firmly. A 'click' sound will indicate proper closing of the Revolizer.
- STEP 4**
Breathe out fully through your mouth. Position the mouthpiece between your teeth and close your lips tightly around it.

- Sit or stand upright, keep your head straight, and **breathe in** through your mouth as rapidly and deeply as you can. When done correctly, you will hear the Rotacap vibrating inside the Revolizer.
- Remove the Revolizer from your mouth and hold your breath for about 10 seconds or for as long as it is comfortable. It is important to inhale all the powder in the Rotacap chamber. You may need to repeat step 4 in case some powder remains in the Rotacap chamber.
- STEP 5**
After every use, open the mouthpiece (till both arrows meet) and discard the empty Rotacap. Close the mouthpiece and store the Revolizer in the convenient carry pouch provided.
- For your next use, take a new Rotacap and follow steps 1 to 5.

- How to clean your Revolizer**
- You must remember to clean the Revolizer at least once a week to ensure smooth functioning.
 - Open the mouthpiece (till both arrows meet) of the Revolizer.
 - If there is an empty Rotacap in the chamber, remove it.
 - Rinse the mouthpiece and Rotacap chamber in clean running water.
 - Shake well to remove excess water and leave to air dry. This can take upto 6 hours, so preferably clean the Revolizer and leave to dry overnight. Do not expose the Revolizer to heat.
- How to store your Revolizer**
- Store the Revolizer along with the Rotacap bottle in the convenient carry pouch provided.
 - Keep the Rotacap bottle tightly closed to avoid exposure to moisture.



Unfold the opposite page to view the diagrams along with the corresponding instructions for the proper use of the Revolizer.

PACKAGING DEVELOPMENT

Product Name: New Revolizer Device		Material No.: 99308447	Version: 01	Item: Leaflet	Co-ordinator: Sandhya	Artist: Shashikant	Date: 09/05/2018
Colours: BLUE WOOL TEST VALUE 5-8 (LIGHT FASTENING DATA) PANTONE COOL GRAY 11 C PANTONE 382 C Silver Colour				INK: Oil based Ink from DIC OR MICRO			
Design: Booklet		Reference: IW90 A		Software: Illustrator CC			
Fonts: -----			Links: NA				
Actual Size: 70 x 70 mm	Size after folding: -	Pharmacode:-		Grain Direction : Parallel to length		Screen : # __	
Material: 90 GSM Glossy Lumi Paper.				Varnish:		Artwork Print Size: <input type="checkbox"/> actual <input type="checkbox"/> scaled	
Path: F:\Jobs\OTC\Sandhya\Iran\Revolizer\99308447 New Revolizer Device Leaflet Iran.ai							
• Instructions / Remark: - • Any deviation must be brought to the notice of packaging development co-ordinator immediately. • For any clarification, please contact packaging development co-ordinator immediately. NO CHANGES IN ARTWORK SHOULD BE DONE BY THE PRINTER • The printer should verify the e-proof against the approved artwork before submitting for approval and the e-proof should have printer details .			Checked by	Artist	Cordinator	file loaded in Server	Section Head
			Pharma Code	<input type="checkbox"/>	<input type="checkbox"/>		
			2D Code	<input type="checkbox"/>	<input type="checkbox"/>		
			QR Code	<input type="checkbox"/>	<input type="checkbox"/>		
			Bar Code	<input type="checkbox"/>	<input type="checkbox"/>		
			Artwork	<input type="checkbox"/>	<input type="checkbox"/>		
			Spell check	<input type="checkbox"/>	<input type="checkbox"/>		